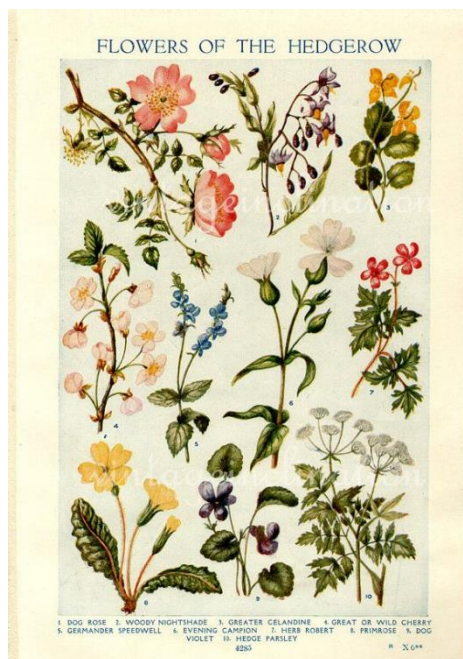


FIRST DRAFT OF COLOURWAY KITS FOR THE
2020 SCHEEPJES CAL

HERBARIUM



Stone/River Washed

- MC: Pink quartzite 821 (pink cream)
- C2 Rose quartz 820 (pink)
- C3 Rhodochrosite 835 (orangey pink)
- C4 Morganite 834 (pink orange)
- C5 Axinite 831 (sand)
- C6 New jade 819 (pale green)
- C7 Canada jade 806 (leaf green)
- C8 Fosterite 826 (bright green)



Colour Crafter

- MC: 1218 Zandvoort (sand)
- C2 1240 Ommen (light pink)
- C3 2013 Mechelen (bright pink)
- C4 1026 Lelystad (light orange)
- C5 2010 Hasselt (dark sand)
- C6 1316 Almelo (light green)
- C7 1824 Enschede (leaf green)
- C8 2016 Charleroi (bright green)



CRYSTALS AND GEMSTONES



Stone/River Washed

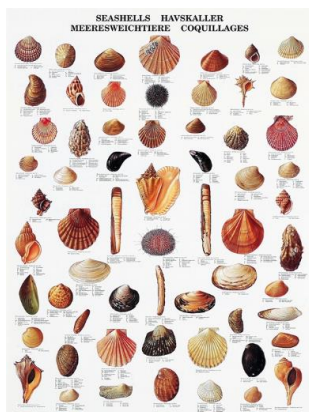
- MC: Lilac quartz 818 (lilac)
- C2 Tourmaline 836 (pink)
- C3 Mekong 943 (Pink)
- C4 Beryl 833 (golden yellow)
- C5 Deep amethyst 811 (purple)
- C6 Malachite 825 (dark turquoise)
- C7 Tiber 958 (greenish blue)
- C8 Enstatite 832 (gold)

Colour Crafter

- MC: 1724 Helmond (lilac)
- C2 2006 Luik (pink)
- C3 1241 Den Bosch (pink)
- C4 2004 Brussel (golden yellow)
- C5 1277 Amstelveen (purple) OR 859 Burton
- C6 2012 Knokke (blue)
- C7 1829 Wilnis (blue)
- C8 1114 Eindhoven (gold)



CONCHOLOGY



Stone/River Washed

- MC: Moonstone 801 (white)
- C2 Lepidolite 830 (brown)
- C3 Garnet 810 (purplish brown)
- C4 Coral 816 (coral red)
- C5 Crystal quartz 814 (light grey)
- C6 807 Red Jasper (fire red)
- C7 Carnelian 823 (true red)
- C8 Yellow Jasper 809 (gold)

Colour Crafter

- MC: 1001 Weert (white)
- C2 1004 Veendam (brown)
- C3 2007 Spa (purplish brown)
- C4 1723 Vlissingen (orange) OR Velvet in 852 Garland
- C5 2019 Sint Niklaas (grey)
- C6 1246 Maastricht (red)
- C7 1709 Burum (gold) OR Velvet in 860 Fonda
- C8 1123 Roermond (warm red)



ENTOMOLOGY



Stone/River Washed

- MC: Smokey Quartz 802 (dark grey)
- C2 Amazonite 813 (light blue)
- C3 Blue apatite 805 (dark blue)
- C4 Green agate 815 (light turquoise)
- C5 Black Onyx 803 (black)
- C6 Rhine 952 (torquoise)
- C7 Danube 948 (dark turquoise)
- C8 Obsidian 829 (brown)



Colour Crafter

- MC: 2018 Pollara (dark grey)
- C2 1034 Urk (light blue)
- C3 2011 Geraadsbergen (dark blue) OR Velvet in 842 Taylor
- C4 1422 Eelde (light turquoise)
- C5 1002 Eelde (black)
- C7 2015 Bastonge (dark turquoise)
- C6 1068 Den Helder (blue) OR Velvet in 844 Hepburn
- C8 1054 Haarlem (brown) OR Velvet in 851 Gardner